

www.infraphil.info

infraphil

PHILIPS
INFRAPHIL

infraphil

infraphil

INFRAPHIL

infraphil

infraphil



infraphil

INFRAPHIL

PHILIPS
infraphil

infraphil

infraphil

infraphil

infraphil

Infraphil

INFRAPHIL

www.infraphil.nl

PHILIPS
infraphil



instruction book

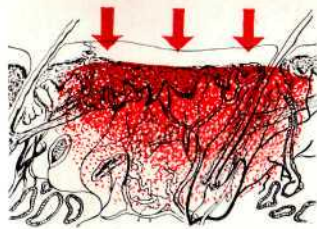
CONTENTS		page	
Healing warmth	3	
Rheumatic complaints	5	
Muscular pain	5	
Chills	5	
Bruises	6	
Sprains	6	
Inflammations of the skin	6	
Boils	6	
Wounds	6	
Pain after dental extraction	7	
Insect bites	7	
IMPORTANT HINTS	8	
Description of the "Infraphil"	10	
Beauty treatment	12	
Loss of hair	13	
Chilblains, numb fingers	13	
Massage	13	
For increasing athletic performance	14	
Pets	15	
Replacement of the lamp	16	

PHILIPS

infraphil

HEALING WARMTH

It has been known for some time that, in many cases, warmth can speed up the process of healing and can alleviate pain. This warmth is applied in the most effective and practical way with the help of Philips "Infraphil." The "Infraphil" warms the skin and the tissue beneath the skin in such a way that the blood vessels are dilated and the blood circulation is facilitated. The blood conveys body-building materials and anti-bodies to the affected part, whilst at the same time waste products are carried off rapidly. Thus the process of healing is speeded up and the pain alleviated.



It is then not surprising that the "Infraphil" is already greatly appreciated in many families for the treatment of all kinds of trifling ailments, muscular pain, chills, bruises, sprains, slight inflammations, etc.

In comparison with the "Infraphil", hot water bottles, warm compresses and other sources of warmth are old-fashioned and impracticable. At the beginning of a treatment a hot water bottle is usually too hot and later on too cold, with the result that the skin can be burnt before enough warmth has penetrated sufficiently deep. With the "Infraphil" the degree of warmth is the same from beginning to end: pleasant and constant.

The "Infraphil" is much handier in use; head or arms can be treated just as easily as the back or shoulder. The "Infraphil" is always ready for immediate use: as soon as you have plugged it into the socket the whole intensity of its healing warmth is at your disposal!

The "Infraphil" can be used for adults as well as for children. Household pets can also be successfully treated. Apart from the above applications, the "Infraphil" can be very useful for beauty treatment, massage and sport. You will find more about this on pages 12. etc.

Healing warmth in every home!

- ★ A maximum of healing warmth.
- ★ The cheapest remedy. The power consumption for a normal treatment of 15 minutes is only 0.04 kWh; you can calculate that this will cost you practically nothing.



In these cases
you can use your

PHILIPS
★
infraphil

The "Infraphil" is practically always successful in cases of muscular rheumatism, muscular pain and lumbago! The pain diminishes or disappears very speedily. It is necessary to continue the treatment daily until the pain has completely disappeared. The "Infraphil" can also be useful for some forms of rheumatism of the joints, not, it is true, for healing, but to alleviate the often severe pain. You should, however, first consult your doctor in cases of *rheumatism of the joints!*

Muscular
rheumatism,
muscular pains



Many people get chills several times a year. For this reason alone it is useful to acquire an "Infraphil." A chill which is developing can be suppressed by the use of the "Infraphil": if a cold has already developed, the treatment can considerably relieve the difficulty in breathing and the heavy feeling.

Chills



Bruises,
sprains



For bruises and sprains the use of the "Infraphil" and the continuation of the treatment until all pain and stiffness has disappeared, together with an elastic bandage for support, is the treatment to be recommended. This should start about 12 hours after the accident. The bandage must be removed before the treatment. As a rule it is not necessary to rest. It is worthy of note that with this treatment there is less pain in comparison with the old-fashioned method of treatment with rest and tight bandages! Consult your doctor in cases of *serious* bruises and sprains.

Inflammations
of the skin



Boils and slight inflammation of the skin (for instance, inflamed blackheads, etc.) will not develop to the same extent if an "Infraphil" treatment is applied immediately.

In the case of persistent inflammation, however, the process of healing can be speeded up by regular use of the "Infraphil," if necessary combined with treatment by the doctor. In the case of *widespread* inflammation and of constantly recurring boils always consult your doctor.

Wounds

Wounds will heal more quickly with the "Infraphil," owing to the improved supply of blood, while the chance of infection is limited. If the wounds are *inflamed* the doctor should be consulted before the treatment.

Pain after extraction of teeth can nearly always be avoided, or, if it has already occurred, be considerably alleviated. If the pain becomes worse, however, the dentist must be consulted. Refer especially to what is said on page 8 as regards the use of the "Infraphil" after local anaesthetic and after taking sedatives.

Pain after
dental
extraction



For insect bites the "Infraphil" is applied to counteract the itching, pain and the tightness of the skin.

Insect bites

When should you consult the doctor?

The "Infraphil" is a valuable, modern home remedy, which you can safely use for everyday use in cases in which you normally would not consult the doctor. When, however, real symptoms of illness appear, or when apparently trivial symptoms persist, the doctor must be consulted. "Doctoring" yourself with the "Infraphil" is just as unwise as it is with other home remedies.

In all those cases where warmth can induce recovery or can alleviate pain, and there are many such cases, the doctor will prescribe the use of the "Infraphil" or approve it.

IMPORTANT HINTS FOR USE

The "Infraphil" is suitable for use on a nominal mains voltage of 240 volts D.C. or A.C. The lamp heats rapidly and may be used as soon as power is switched on.

Distance to the skin

You must determine the distance of the lamp to the skin yourself. This should be such that the heat is agreeable without inducing a sensation of burning. As a rule this will be 30 to 50 centimetres (12 to 20 inches).

After the use of pain killers or sedative drugs, after local anaesthetic (e.g., by the dentist), and also in the case of certain illnesses, there is a reduced sensitivity to heat. In these cases care should be taken that the distance is not too short (at least 50 centimetres/20 inches), because excessive heat may be applied without being noticed.

Exposure time



It is not necessary to give exact instructions as regards exposure time. The "Infraphil" treatment can be continued for an unlimited period and can be repeated several times a day. You can use the "Infraphil," for example, twice a day for 15 minutes; this will, moreover, give better results than one period of 30 minutes.



IMPORTANT



- *No inflammable articles within the range of the beam! Celluloid combs and spectacle frames, petrol, etc., might catch fire or get scorched.*
- *If part of the face near the eyes is being treated it is advisable to keep the eyes closed.*
- *Guard against a too sudden cooling immediately after the treatment (e.g., of the head).*
- *Do not subject the lamp to heavy shocks. As the incandescent body attains very high temperatures when it is switched on, it can be damaged, for instance, by being put down very abruptly.*

PHILIPS

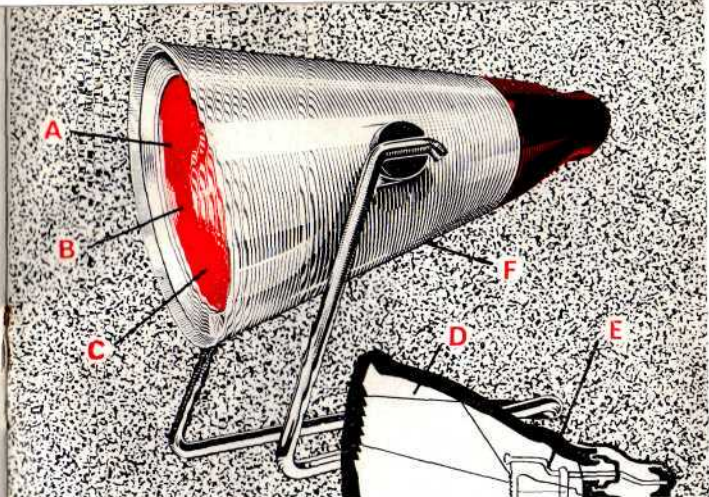
MODEL KL 7500

infraphil

Owing to a new production technique this "Infraphil" lamp is extremely compact, thus especially handy to use, while the results obtained are even better than formerly.

- A FRONT WALL WITH IMPRESSED PRISMATIC RINGS**—This produces a lens effect, which induces a very beneficial concentration of warmth over a large area.
- B FILTER ALLOWING PENETRATION OF WARMTH**—The front wall is fitted with a solid layer of special red filter glass, which allows the healing warmth to penetrate to the maximum extent.
- C UNBREAKABLE GLASS**—The lamp, even when burning, is resistant to the effects of sudden cooling, e.g., when splashed with water.
- D INSIDE MIRROR**—The inside of the bulb is coated with a reflective layer which can never be damaged or get dull.

Owing to the special shape of the bulb the reflective mirror is also located behind the incandescent body so that the entire warmth is reflected towards the front and is thus used effectively.



- E SPECIAL INCANDESCENT BODY**—The heart of the lamp consists of a special incandescent body which constitutes the source of the healing warmth.
- F PRACTICAL FIXTURE**—The fixture for this "Infraphil" lamp is simple and efficient. It can be stood on a table or suspended from a bracket, which allows the beam to be directed upwards or downwards at will.



LOOK AFTER YOUR APPEARANCE

Beauty
treatment



To acquire an unblemished, healthy skin it is necessary for the skin to receive an abundant supply of blood. It is not possible to give the massage which is used for this purpose oneself. Therefore it is so important that this can be most effectively replaced by treatment with the "Infraphil." This dilates the blood vessels, the skin is supplied with new body-building materials, and is cleaned out, as it were, from within. The formation of wrinkles, blackheads and clogged pores is arrested. Furthermore, cosmetic

preparations, such as night creams, are more readily absorbed if the "Infraphil" is used before and after applying the creams. The "Infraphil" is suitable for a dry as well as a greasy skin.

Daily treatment with the "Infraphil" can sometimes speed up the healing process of temporary loss of hair, sometimes in combination with massage of the scalp.

The "Infraphil" is most effective in cases of chapped skin, chilblains, numb fingers, cold feet and ulcers caused by varicose veins, etc., as all these symptoms have the same origin: reduced blood circulation. The warmth of the "Infraphil" dilates the blood vessels and improves the blood circulation. It is very important that this treatment be started in good time.

The effect of massage is considerably increased by a prior or simultaneous application of the "Infraphil." The muscles become more supple, which facilitates massage, while the circulation of the blood is better than could ever be achieved by massage alone. Thus subcutaneous haemorrhage and accumulations of fat and fluid, for instance, disappear more rapidly.

Loss of hair



Chilblains,
numb fingers



Massage





THE "Infraphil"

FOR SPORT

Better
performance



Quick recovery
after
minor ailments



Athletic performance is not only dependent on the strength of the muscles, but also upon the extent with which they are supplied with blood.

If the "Infraphil" is applied before taking part in athletics, the supply of blood is increased so that any effort can be made from the most favourable muscular condition! During the intervals of rest the "Infraphil," perhaps combined with massage, can aid in dispelling tiredness, muscular cramp and stiffness. The increased circulation of blood carries off the fatigue products and at the same time fresh energy is brought to the muscles.

Abrasions, sprains, muscular cramp, bruises and slight haemorrhages are common to all forms of sport. Naturally the "Infraphil" can render excellent service here. For more details turn to pages 5, etc.



"Infraphil" TREATMENT FOR PETS

The "Infraphil" is not only useful for all sorts of "human" complaints, but sick or wounded animals will recover more quickly under its beneficial healing warmth.

For bruises, sprains, muscular pain (e.g., of racehorses and greyhounds), eczema, bald patches, inflammation of the skin and teats, swollen hock and badly healing wounds . . . the "Infraphil" always contributes towards steady and complete recovery with the minimum of scar formation.

The use of the "Infraphil" is also to be recommended after dogs have been trimmed. In general, the indications on the pages 8 and 9 apply to animals as well. It will be evident that treatment will be more effective in places where the fur is thin or can be shorn off.



Replacement of the lamp

If it appears necessary to replace the lamp it can be removed from the fitting as follows:



First remove the clamping ring (in the front of the fitting) with the help of a small, pointed instrument, e.g., small screwdriver, see diagram. This can be done more easily if the lamp itself (which can spring back slightly) is pressed slightly inwards.

To remove the lamp it must be pressed in a little and turned to the left (approximately an $1/8$ th of a turn).

When fixing the new lamp it should be remembered that it fits into the holder in one position only: the three pins on the base must engage with the three slots in the holder. The lamp should then be pressed in until it meets resistance, then turn it to the right (about $1/8$ th of a turn). Finally, replace the clamping ring.

PHILIPS ELECTRICAL PTY. LIMITED.

166
SN. 5/68

www.infraphil.info

infraphil

**PHILIPS
INFRAPHIL**

infraphil

***infraphil**

INFRAPHIL

***infraphil**

infraphil



infraphil

INFRAPHIL

**PHILIPS
infraphil**

infraphil

infraphil

***infraphil**

***infraphil**

Infraphil

INFRAPHIL

www.infraphil.nl

